

## Tacho Pro v2008



# How to use the Universal Dash Programmer

## Power supply

The Universal Dash Programmer handheld is powered with 12 V by a 3,5 mm miniplug (port 1). Please use an AC adapter with at least 500 mA, better 1 A.



External power supply is necessary when programming a detached odometer. When programming through the diagnostic port, the handheld is powered by the car through the port. The diagnostic plug is positioned in port 3.

### **Warning:**

**When programming through the diagnostic port, do not supply the handheld with power through port 1!**

## Start menu:

When supplying the handheld with power, you can see the start menu in the display. It offers the possibility, to change the backlight by pressing the **STOP** button.

Now the handheld is asking for a password. This function is always activated when you get a Universal Dash Programmer, but you can switch it off (⚙ options).

## Menu

---

After the start menu, you see the main menu with the different manufacturers and the menu OPTIONS, and SYNC.

With button 8 you can move up, with button 2 down. Then the bar is on the desired menu, press OK. If you have chosen a wrong menu, you can quit by pressing STOP.

## Menu Options

### ■ Choose language

Here you can choose a different language for the Universal Dash Programmer.

### ■ New PIN

First you have to enter the old PIN. Then the handheld asks you for the new PIN that you have to repeat again. The password consists of a combination of pressing 6 button of your choice.

### ■ Erase all eeps

With this menu you erase all data that you have saved before. First you have to press E to verify, then you have to enter your PIN.

### ■ Clear 1 EEP

Here you can erase the last data you have saved.

### ■ Verify PIN

With this menu you can switch on or off the password function when starting the handheld. With the button STOP you can switch it off. To switch it off you have to verify it with the password.

## Menu updater

This is for new software, for example new manufacturers or models can be unlocked with this function. Therefore contact us.

---

**NOTE:**

Generally software improvements are installed by the start menu (0 for update).in the main menu updater is only used to unlock new programs.

## Menu SYNC

Used for saving data from your handheld to your computer. This is done with the program Universal Dash and a 0-modem-cable. Choose SYNC when the program asks for it.

### Diagnostic programming

Programming by the diagnostic-port of the car is the easiest and most safe way. Put the diagnosis-plug to the port and the other end to the handheld (port 3).

Turn ignition on and choose the menu you need. Choose the Diagnostic function. Enter the desired mileage and press OK.

More details for the different models are in the separate manual.

**Note:**

The handheld does not show the old value for all models. But if it is displayed, it must be the correct mileage (small variations are ok).

### Programming by cluster plug

After removing the cluster from the car, connect it with the plug and the handheld. Power the handheld by port 1.

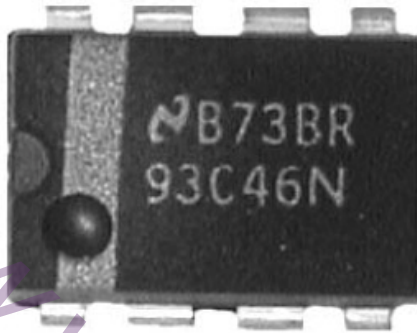
More details for the different models are in the separate manual.

**Note:**

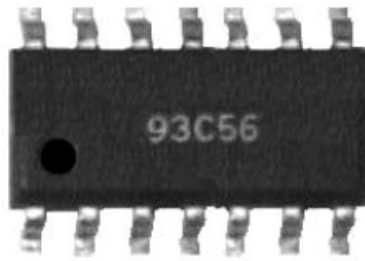
The handheld does not distinguish between the programming methods diagnosis and cluster plug, it always show you the option "Diagnosis".

### EEPROM programming

Some cars have to be programmed directly by the EEPROM. Those EEPROMS can look like that:



DIL 8 pin



SMD 14pin



SMD 8pin

**Note:**

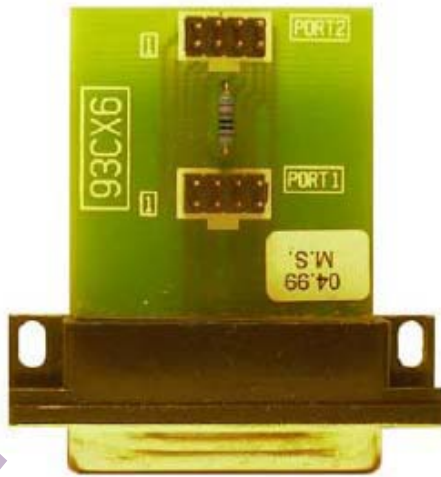
The text on the EEPROM can differ from what you see on the picture.

When you can read what is written on the EEPROM, you have pin 1 on the left side on the bottom.

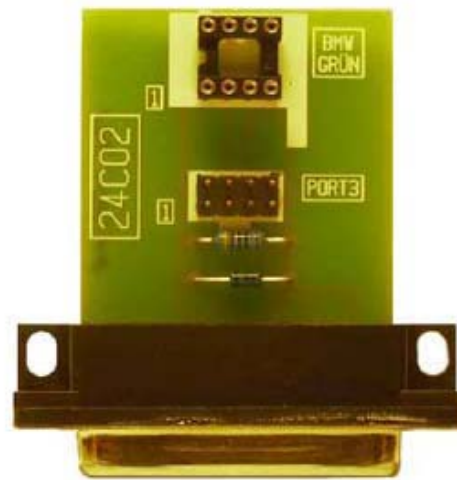
**Note:**

Often pin 1 is also marked by a small point like on the picture.

There are 2 different EEPROM families: the 93CX6 series and the 24C0Xseries. Depending on the series, you use the fitting adapter-board:



Adapter 93CX6



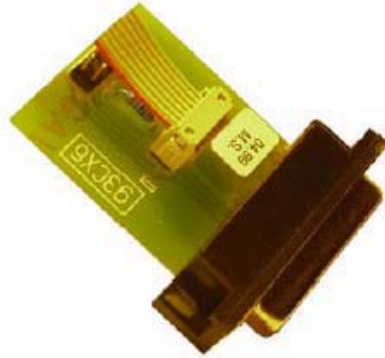
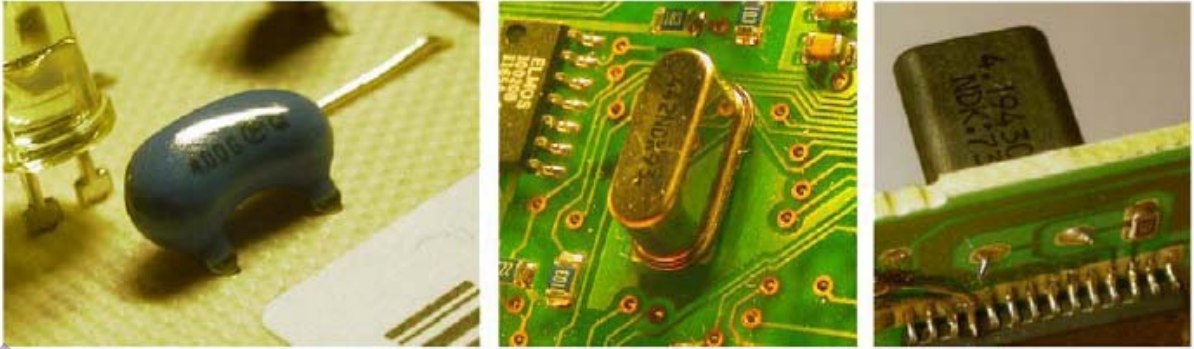
Adapter 24C0X

**Warning:**

**Using the wrong adapter-board will destroy the EEPROM!!!!**

For programming EEPROMS please follow the instruction step by step:

- Ensure the EEPROM is clean and there is no paint or wax on it.
- All oscillators(crystals) on the board must be joined together.
- Put the clip on the EEPROM, with the red mark on pin 1.
- Put the correct adapter-board in port 3 of the handheld.
- Power the handheld by port 1.
- Join the other end of the clip to the 8 pin port on the adapter-board with the red cable on the pin 1 mark.
- In the main menu choose the car model and the method clip.
- When you press OK the handheld reads the EEPROM and jumps to the EEPROM menu.
- In the right upper corner you can see the current mileage. Small variation are ok. If the displayed value is good, save all data with the menu SAVE.
- With the menu adjust KM you can write in the new value that you want. The handheld will verify the successful programming.
- Now carefully remove the clip from the EEPROM and remove the connections from the crystals.



## Additional EEPROM functions

- Show  
a complete hex editor
- Read EEPROM  
You can read the EEPROM again, the mileage will also be displayed again
- Save  
You can save up to 200 data bases
- Adjust KM  
If you have chosen the right menu, only the relevant data for the mileage is changed
- Load file



---

Saved data base can be loaded to the editor

- Write all

Writes all EEPROM data

**Warning:**

The function write all is only for repair and experienced users.

The hex editor in the menu show offers the possibility to show all EEPROM data and to edit it. There are 2 different modes: the scroll and the edit mode. If the handheld is in the scroll mode, you can move the cursor with keys 2,4,6 and 8. at the bottom of the display, you can read:

<Stop>Edit at 000

The numbers and letters show the current position of the cursor. To switch to the edit mode, press **Stop**. Now you can change the data. To leave the editor, press **OK**. To send the manual altered data to the EEPROM, you have to change the option **Write all**.

**Warning:**

The function write all and altering the data manually is only for experienced users.

**Note:**

With the editor, you can check if the handheld reads something or if there is only FF or 00 in the data base. When you are in the scroll mode, you can read the EEPROM again by pressing the button A. pressing button B compares the data in the EEPROM to the data in the display.

## Programming by soldering plug

For some instruments you have to solder cables to the processor or some pints in the circuit board.

Detailed instructions can be found in the separate manual.



**Warning:**

When soldering, the handheld must not be connected to the plug, otherwise the handheld may be DESTROYED!!!!

**DIGIMASTER BASIC PACKAGE LIST:**



11 DU



4155 Gr. Cherokee



908



912



**Alfa 145**



**Alfa 156**



**Alfa 166**



**AUDI A6 ALT**



**AUDI2000**



**B518044**



**BMW E36**



**BMW HW 4/5/6**



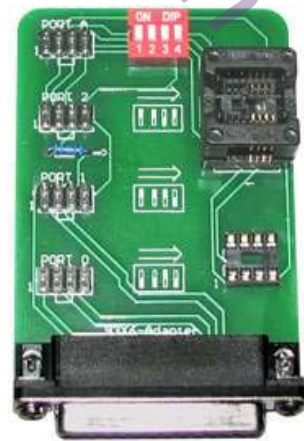
**CAN OBD DM1**



**Chrysler Diagnose**



**Mercedes Diagnostic**



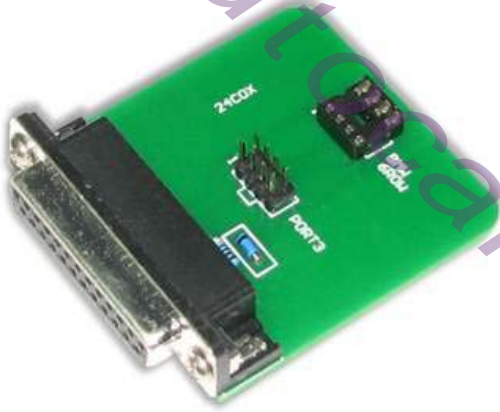
**93x6-Adapter**



**EEPROM-35/95xxx**



**912dongle**



**EEPROM 24xx**



**BMW diagnostic**



**K-OBD DM1**



**MB Service**





**MB-CAN**



**Multi CAN**



**Multi Scorpio**



**OBD II**



**P106**



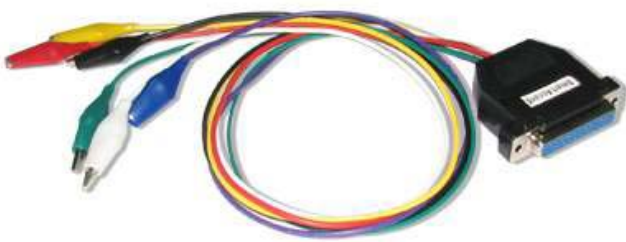
**P206**



**P406**



**P607**



**Smart Accord**



**Sprinter Kienzle**



**Sprinter**



**SRI & CCD**



## VW/CAN

- diagnosis-plug: programming without removing the cluster
- cluster-plug: programming without opening the cluster
- eprom: programming the eeprom by clip
- soldering contacts: programming by soldering contacts on the circuit board
- processor: processor direct programming

**Version 1** is the basic version.

With it the most usual vehicles can be programmed. Ideally for newbies.

**Version 2** is suitable for the professional.

Here also exotic cars are contained, with which soldering work on the processor is contained.

**BMW-Upgrade** is suitable for the BMW professional.

The hard and software for the treatment of the BMW keys and light modules. The BMW-Upgrade is functional only in connection with a DIGA-Consult handheld.

Hersteller	Modell	Version	Methode	V1	V2
Aprilia	Falco	100 Pin	Prozessor		
	RSV Mille	100 Pin	Prozessor		
	Racing 125		Eeprom		
	SR Factory		Eeprom		
	Scarabeo		Eeprom		
	Scarabeo 500	Modell 2004	Eeprom		
Alfa Romeo	145	Alt	Prozessor		
		Neu	Prozessor		



146	Alt	Prozessor
	Neu	Prozessor
147		Eeprom
147		NEC-Processor
156	bis 2002	Tachodiagnose
	ab 2002	Tachodiagnose
159		Eeprom
166		Prozessor
	Modell 2002	Eeprom
Spider		Prozessor
GT		Eeprom
GTV		Prozessor
Motor- Steuergeräte	Euro 2 & Euro 3	Eeprom
Motor-Steuergeräte	Euro2 & Euro3 Neue Version	Eeprom

Aston Martin	DB7	Prozessor
	DB9	Prozessor

Audi	A2	VDO	Eeprom
		VDO	Tachodiagnose
		VDO	Diagnose
		VDO Modell 2002	Eeprom
		VDO Modell 2002	Diagnose
A3/S3		VDO	Eeprom
		VDO	Diagnose
		UKNSI	Eeprom
		VDO ab 2000	Eeprom
		VDO ab2000	Tachodiagnose
		VDO ab 2000	Diagnose
		Jaeger bis 6/2001	Tachodiagnose
		Jaeger bis 6/2001	Tachodiagnose
		Jaeger ab 7/2001	Tachodiagnose
		Jaeger	Diagnose
		VDO Modell 2002	Eeprom

---

	VDO Modell 2002	Diagnose
	VDO Modell 2005	Diagnose
A4/S4	VDO alt	direkt
	VDO alt	Diagnose
	VDO alt MFA	Eeprom
	VDO alt MFA Version 1	Diagnose
	VDO alt MFA Version 2	Diagnose
	VDO neu	Eeprom
	VDO neu	Diagnose
	UKNSI alt	Eeprom
	UKNSI neu	Eeprom
	UKNSI 2 Eeproms	Eeprom
	VDO ab 2000	Eeprom
	VDO ab 2000	Tachodiagnose
	VDO ab 2000	Diagnose
	Jaeger	Tachodiagnose
	Jaeger bis 6/2001	Tachodiagnose
	Jaeger	Diagnose
	Bosch 2001	Eeprom
	Bosch 2001	Diagnose
	Bosch 2002	Eeprom
	Bosch 1/01-9/01	Diagnose (Schnell-Suche)
A6/S6	VDO alt	Eeprom
	VDO alt	Diagnose
	VDO neu	Eeprom
	VDO neu	Diagnose
	VDO ab 2000	Eeprom
	VDO ab 2000	Tachodiagnose
	VDO ab 2000	Diagnose
	Jaeger bis 6/2001	Tachodiagnose
	Jaeger bis 6/2001	Tachodiagnose
	Jaeger ab 7/2001	Tachodiagnose
	Jaeger	Diagnose

	VDO Modell 2002	Eeprom
	VDO Modell 2002	Diagnose
	Magnetti-Marelli Modell 2005	
A8/S8	VDO Version 1	Eeprom
	VDO Version 1	Diagnose
	VDO Version 2	Eeprom
	VDO Version 2	Diagnose
	VDO ab 1999 Version 1	Eeprom
	VDO ab 1999 Version 2	Eeprom
	VDO Modell 2005	
TT	Jaeger	Diagnose
	Jaeger ab 2000	Tachodiagnose
	Jaeger bis 6/2001	Tachodiagnose
	Jaeger ab 7/2001	Tachodiagnose
	Jaeger ab 2000	Diagnose
Service-Anzeige	alle Modelle	Diagnose
TV-Freischaltung		Anleitung

Bentley	GT	Eeprom
---------	----	--------

Benelli	Benelli Tornado	Eeprom
	TNT	Eeprom

BMW	3er E36	bis SW 23	Diagnose
		SW 24	Tachodiagnose
	3er E36 Compact	SW 20	Tachodiagnose
		SW 6+7	Tachodiagnose
		SW 9+10	Eeprom
	3er E46	SW 9+10	Tachodiagnose
		bis SW 16	Eeprom
		bis SW 16	Diagnose

---

	Service-Anzeige	Eeprom
	ab SW 17 ohne Eepromwechsel	Lötunkte
1er E87	Cluster	Eeprom
1er E87	CAS	Cluster-Plug
3er E90	Cluster	Eeprom
3er E90	CAS	Cluster-Plug
5er E34	Codierstecker braun	Eeprom
	Codierstecker blau	Eeprom
	Codierstecker grün	Eeprom
5er E39	low	Eeprom
	low	Diagnose
	low SW 15	Diagnose
	low SW 16	Diagnose
	low ab SW 17 ohne	Lötunkte
	Eepromwechsel	
	high + IKE	Eeprom
	high + IKE	Diagnose
	high -IKE	Tachodiagnose
	high – IKE SW 13	Lötunkte
	high – IKE ab SW 14 ohne	Lötunkte
	Eepromwechsel	
5er E60	Cluster	Eeprom
5er E60	CAS	Cluster-Plug
5er E61	Cluster	Eeprom
5er E61	CAS	Cluster-Plug
6er E63 (Coupe)	Cluster	Eeprom
6er E63 (Coupe)	CAS	Cluster-Plug
6er E64 (Cabrio)	Cluster	Eeprom
6er E64 (Cabrio)	CAS	Cluster-Plug
7er E32	Codierstecker braun	Eeprom

	Codierstecker blau	Eeprom
	Codierstecker grün	Eeprom
7er E38	low	Eeprom
	low	Diagnose
	low SW 15	Diagnose
	low SW 16	Diagnose
	low ab SW 17	
	ohne	Lötpunkte
	Eepromwechsel	
	high + IKE	Eeprom
	high + IKE	Diagnose
	high -IKE	Tachodiagnose
	high – IKE SW 13	Lötpunkte
	high – IKE ab SW	
	14 ohne	Lötpunkte
	Eepromwechsel	
7er E65		CAS Diagnose
7er E65		Fehlerspeicher
7er E65 (Facelift)	Cluster	Eeprom
7er E65 (Facelift)	CAS	Cluster-Plug
7er E66 (Long Version)	Cluster	Eeprom
7er E66 (Long Version)	CAS	Cluster-Plug
8er E31		Eeprom
		Diagnose
Z3	SW 20	Tachodiagnose
	SW 6+7	Tachodiagnose
	SW 9+10	Eeprom
	SW 9+10	Tachodiagnose
X3		Eeprom
X5	high – IKE SW 13	Lötpunkte
	high – IKE ab SW	
	14 ohne	Lötpunkte
	Eepromwechsel	

---

Z8		Eeprom
ServiceReset	Ab Bj.2001 Über OBD II	Diagnose
TV-Freischaltung	MK I + MK II (bis 1999)	Anleitung
	MK III (ab 2000)	Diagnose
F650 GS		Eeprom
C1		Eeprom

## Citroen

Xsara		Eeprom
Xsara	Ab 2000	NEC-Hardware
Xsara	Modell 2003	Eeprom
Xsantia		Eeprom
Berlingo	Bis Modell 2003 BSI	NEC-Hardware
	Ab Modell 2003 Tacho + BSI	Eeprom
C2	Bis 2004 Tacho+BSI	Eeprom
C2	Ab 2004 Tacho+BSI	Eeprom
C3		Eeprom
C4		Eeprom
C5	Modell 2001 BSI	Lötpunkte
C5	Modell 2002 Tacho + BSI	Lötpunkte
C5	BSI Valeo	Eeprom
C5	BSI Valeo V2 BSI neu	Eeprom
C5	Version 2	Lötpunkte
C5	Version 3	Lötpunkte
C5	Version 4	Lötpunkte
C5	Version 5	Lötpunkte
C8	3 Module	Eeprom + Lötpunkte
Dispatch		Prozessor
Evasion		Prozessor
Jumper		Eeprom
Jumpy	V1	Prozessor

---

Picasso	Bis Modell 2003 BSI	NEC-Hardware
	V2	Prozessor
Picasso	2004 Tacho + BSI	Eeprom
Saxo		Tachodiagnose
Synergie		Prozessor
Relay		Eeprom

Cagiva	Raptor	Eeprom
--------	--------	--------

Chrysler	Cherokee	Diagnose	
		Modell 2002	Diagnose
		Modell 2003	Diagnose
	Crossfire		Diagnose
	Grand Cherokee	bis 3/1999	Diagnose
		4/1999 -2002	Tachodiagnose
		ab 2002 (912)	Diagnose
	Grand Cherokee	Modell 2005	Eeprom
	Liberty		Diagnose
	Neon		Diagnose
	PT Cruiser		Diagnose
		Modell 2002 (912)	Diagnose
	Stratus	bis 1999	Diagnose
		ab 1999	Diagnose
	Wrangler		Diagnose
	Voyager	bis 1999	Diagnose
	ab 1999	Diagnose	
	Modell 2002 (912)	Diagnose	
300C		Prozessor	
SRI-Speicher	alle Modelle	Diagnose	

Daihatsu	YRV	Eeprom
	Terios	Eeprom

Daewoo	Lancetti	Eeprom
	Nubira	Eeprom



Ducati	749		Eeprom
	Monster		Eeprom
Ferrari	360 Modena		Eeprom
	550 Maranello		Eeprom
	F 430		Eeprom
Fiat	Brava	ST	Prozessor
		Custom	Prozessor
		908 Version 1	Prozessor
		908 Version 2	Prozessor
		UKNSI	Eeprom
	Bravo	ST	Prozessor
		Custom	Prozessor
		908 Version 1	Prozessor
		908 Version 2	Prozessor
		UKNSI	Eeprom
	Doblo	Version 1	Prozessor
		Version 2	Prozessor
		NEC	Eeprom
			Eeprom
	Ducato	Nec 2002	Eeprom
	Idea		Eeprom
	Idea Multijet		Eeprom
	Marea	MM3S	Prozessor
		C(QAF/OPT)	Prozessor
		P(68H)	Prozessor
Multipla		Eeprom	
	Modell 2002	Eeprom	
Palio	Version 1	Prozessor	
	Version 2	Prozessor	
Panda		Eeprom	
Panda Multijet		Eeprom	
Punto	2000 Version 1	Lötpunkte	
	2000 Version 2	Lötpunkte	
	2000 Version 3	Lötpunkte	
	2001 Version 1	Lötpunkte	

---

	2001 Version 2	Lötunkte
	2001 Version 3	Lötunkte
	2002 Nec	Eeprom
	2003 Nec	Eeprom
	CAN	Tachodiagnose
Punto Multijet		Eeprom
Scudo	Version 1	Prozessor
	Version 2	Prozessor
Seicento	NEC	Prozessor
Stilo	912	Lötunkte
Strada		Eeprom
Tempra	Tempra	Eeprom
	Borg	Eeprom
	Veglia	Eeprom
Tipo	Borg	Eeprom
	Veglia	Eeprom
Ulysse		Prozessor
Ulysse	2004 3 Module	Eeprom/Lötunkte
Motor-Steuergeräte	Euro 2 & Euro 3	Eeprom
Motor-Steuergeräte	Euro2 & Euro3 Neue Version	Eeprom

## Ford

C-Max		Prozessor
C-Max	Modell 2005	Prozessor
Cougar		Prozessor
Connect		Lötunkte
Escort	Version 1	Lötunkte
	Version 2	Lötunkte
Fiesta	Version 1	Lötunkte
	Version 2	Lötunkte
	Modell 2002	Eeprom
Focus	Version 1	Tachodiagnose
	Version 2	Tachodiagnose
	Modell 2003	Eeprom
<b>Fiesta</b>	<b>Modell 2006</b>	<b>Prozessor (9S12)</b>
Focus	Modell 2005	Prozessor
Focus RS		Lötunkte

Fusion		Eeprom
Galaxy	bis Modell 2001	Diagnose
	ab Modell 2001 Version 1	Eeprom
	ab Modell 2001 Version 2	Eeprom
	ab Modell 2001 Version 1+2	Diagnose
	ab Modell 2002	Diagnose
Maverick		Prozessor
Mondeo		Lötpunkte
Puma		Lötpunkte
Ranger		Lötpunkte
Ranger	Modell 2005	Prozessor (9S12)
Scorpio		Tachodiagnose
Transit	-2003	Eeprom
	2003	Eeprom
Ka		NEC-Hardware

GMC Seville STS Eeprom

Harley-Davidson & Buell  
 alle Modell 2001 Eeprom  
 alle Modell 2002 Eeprom  
 Fatboy Eeprom  
 Buell Firebolt Eeprom

Hyundai  
 Santa Fe  
 Version 1 Eeprom  
 Version 2 Eeprom  
 NEC-Hardware  
 Coupe Eeprom  
 Getz Eeprom  
 Accent Eeprom  
 Matrix Eeprom  
 XG 30 Eeprom  
 Elantra NEC-Hardware  
 Elantra Eeprom  
 Terracan NEC-Hardware

	Tuscan		Eeprom	
Honda	Accord		Eeprom	
		705 Prozessor	Prozessor	
		2003	Lötpunkte	
		Element	Eeprom	
		Civic	Eeprom	
		Civic	Ab Modell 2004	Eeprom
		CRV		Eeprom
		CRV	Modell 2002 bis Modell 2004	Prozessor
		CRV	Ab Modell 2005	Eeprom
		CBR 600	Ab Modell 2004	Eeprom
		CBR Fireblade		Eeprom
		CBR Fireblade	Modell 2005	Eeprom
		CBR 900 Fireblade	Modell 2006	Eeprom
		FRV		Eeprom
		Goldwing	Modell 2004	Eeprom
		HRV		Eeprom
		Jazz		Eeprom
		Jazz	Modell 2004	Eeprom
		Legend		Eeprom
		Logo		Eeprom
		Shuttle		Eeprom
		Stream		Eeprom
		S2000		Eeprom
		SV650	Modell 2005	Eeprom
		Varadero		Eeprom
		VFR 800		Eeprom
			Modell 2004	Eeprom
	VFR 1000		Eeprom	
	VT 1100		Eeprom	
	Hornet		Eeprom	
Isuzu	Trooper		Eeprom	
	Pickup		Eeprom	
	Rodeo		Eeprom	

Iveco	Daily		Eeprom
Jaguar	Daimler/XJ	11DU Version 1	Tachodiagnose
		11DU Version 2	Tachodiagnose
		11DU Version 3	Tachodiagnose
	XK8	bis 2000	Lötpunkte
		ab 2000	Lötpunkte
		ab 2003	Prozessor
	X-Type	Version 1	Lötpunkte
		Version 2	Lötpunkte
	S-Type		
	Modell 2003	Prozessor	
S-Type	Modell 2004	Eeprom	
Kawasaki	GPZ 600		Eeprom
	KVF 650		Eeprom
	ZX 6		Eeprom
	ZX 6R		Eeprom
		2003	Eeprom
	ZX 6R 636		Eeprom
	ZX 9		Eeprom
	ZX 9R		Eeprom
	ZX 12R		Eeprom
	Kia	Carens	
Carnival			Eeprom
Cerato			Eeprom
Picanto			Eeprom
Rio			Eeprom
Rio			Eeprom
Sportage			Eeprom
		Modell 2005	Eeprom
Sorento			Eeprom
Lamborghini	Gallardo		Eeprom
	Diablo	Modell 1999 Bis	Eeprom
		Modell 2001	Eeprom
Murcielago		Eeprom	

Lancia	Kappa		Lötunkte
	Lybra	Version 1	Lötunkte
		Version 2	Lötunkte
		Version 3	Lötunkte
	Musa		Eeprom
	Thesis		Eeprom
	Y	Version 1	Lötunkte
		Version 2	Lötunkte
		Version 3	Lötunkte
		Version 4	Prozessor
		Version 5 SC51 Prozessor	Prozessor
Motor-Steuergeräte	Euro 2 & Euro 3	Eeprom	
Motor-Steuergeräte	Euro2 & Euro3 Neue Version	Eeprom	

Lexus	GS 300		Eeprom
	Harrier Jeep		Eeprom
	IS 200		Eeprom
	LS 200		Eeprom
	LS 300		Eeprom
	LS 400		Eeprom
	LX 470		Eeprom
		Modell 2002	Eeprom
	RX 300		Eeprom
	SC 400		Eeprom

Landrover	Defender		Eeprom
	Discovery	bis 6/2001	Prozessor
		ab 6/2001	Prozessor
	Discovery TD6	Modell 2005	Eeprom
	Freelander	UKNSI+C567	Eeprom
		VDO 2002	Eeprom
	Range Rover	Modell 2002	Eeprom
	Range Rover Sport	Modell 2005	Eeprom
	TD 5	bis 6/2001	Prozessor

		ab 6/2001	Prozessor
Lincoln	Towncar		Prozessor
		1995	Prozessor
		bis 1999	Prozessor
		ab 1999	Prozessor
Lotus	Elise		Eeprom
	Esprit		Eeprom
MAN	LKW	ohne Fahrtenschreiber	Eeprom
Mazda	121		Eeprom
	323	Version 1	Eeprom
		Version 2	Eeprom
		Version 3	Eeprom
	2		Eeprom
	3		Eeprom
	626	Version 1	Eeprom
		Version 2	Eeprom
		Version 3	Eeprom
	6		Eeprom
	Demio		Eeprom
	E2200		Eeprom
	MPV		Eeprom
	MX 5		Eeprom
	Pickup B2500		Eeprom
	Premacy		Eeprom
	RX-8		Eeprom
	Tribute		Prozessor
	Tribute		Processor (9S12)
	Xedos 9		Eeprom
Maserati	Quattroporte		Eeprom
Mercedes	A-Klasse	bis Modell 2000	Diagnose



---

	ab Modell 2000	Tachodiagnose
	ab Modell 2000	Diagnose
C-Klasse (W202)	VDO – 9/1995	Eeprom
	VDO -9/1995	Tachodiagnose
	MotoMeter – 9/1995	Eeprom
	MotoMeter – 9/1995	Tachodiagnose
	9/1995 -4/1998 Version 1	Eeprom
	9/1995 -4/1998 Version 2	Eeprom
	9/1995 -4/1998 Version 1+2	Diagnose
	ab 4/1998	Eeprom
	ab 4/1998	Diagnose
C-Klasse (W203)	Tacho	Eeprom
	Tacho	Tachodiagnose
	Zündschloss Version 1	Prozessor
	Zündschloss Version2	Prozessor
	Zündschloss ab 5/2001	Prozessor
	Tacho flashen	Tachodiagnose
CL (W140)	bis 6/1996	Eeprom
	bis 6/1996	Tachodiagnose
	6/1996 –4/1998 Version 1	Eeprom
	6/1996 –4/1998 Version 2	Eeprom
	6/1996 –4/1998 Version 1+2	Diagnose
	ab 4/1998	Eeprom
	ab 4/1998	Diagnose
CL (W215)	bis 2000	Eeprom
	bis 5/2001	Eeprom

---

	Zündschloss ab 5/2001 Version 1	Prozessor
	Zündschloss ab 5/2001 Version 2	Prozessor
	Zündschloss Modell 2002	Prozessor
	Service-Anzeige	Eeprom
CLK	bis 4/1998 Version 1	Eeprom
	bis 4/1998 Version 2	Eeprom
	bis 4/1998 Version 1+2	Diagnose
	4/1998 –7/1999	Eeprom
	4/1998 –7/1999	Diagnose
	ab 7/1999	Eeprom
	ab 7/1999	Diagnose
E-Klasse	bis 4/1998 Version 1	Eeprom
	bis 4/1998 Version 2	Eeprom
	bis 4/1998 Version 1+2	Diagnose
	4/1998 –7/1999	Eeprom
	4/1998 –7/1999	Diagnose
	ab 7/1999	Eeprom
	ab 7/1999	Diagnose
	W211	Tachodiagnose
G-Klasse		Eeprom
		Diagnose
M-Klasse		Eeprom
		Diagnose
S-Klasse (W140)	bis 6/1996	Eeprom
	bis 6/1996	Tachodiagnose
	6/1996 –4/1998 Version 1	Eeprom
	6/1996 –4/1998 Version 2	Eeprom

---

	6/1996 –4/1998 Version 1+2	Diagnose
	ab 4/1998	Eeprom
	ab 4/1998	Diagnose
S-Klasse (W220)	bis 2000	Eeprom
	bis 5/2001	Eeprom
	Zündschloss ab 5/2001 Version 1	Prozessor
	Zündschloss ab 5/2001 Version 2	Prozessor
	Zündschloss Modell 2002	Prozessor
	Service-Anzeige	Eeprom
SL (R129)	bis 6/1996	Eeprom
	bis 6/1996	Tachodiagnose
	6/1996 –4/1998 Version 1	Eeprom
	6/1996 –4/1998 Version 2	Eeprom
	6/1996 –4/1998 Version 1+2	Diagnose
	ab 4/1998	Eeprom
	ab 4/1998	Diagnose
SL (R230)	Tacho	Eeprom
	Zündschloss	Prozessor
	Zündschloss Modell 2002	Prozessor
SLK	bis 4/1998 Version 1	Eeprom
	bis 4/1998 Version 2	Eeprom
	bis 4/1998 Version 1+2	Diagnose
	ab 4/1998	Eeprom
	ab 4/1998	Diagnose
Sprinter	VDO bis 1999	Eeprom

---

	Version 1	
	VDO bis 1999	Eeprom
	Version 2	
	VDO bis 1999	Tachodiagnose
	Version 1+2	
Betriebsstunden	VDO bis 1999	Eeprom
	VDO ab 2000	Eeprom
	Kienzle bis 1999	Eeprom
		Diagnose
	Kienzle ab 2000	Eeprom
	Magneti Marelli	Prozessor
	Version 1	
	Magneti Marelli	Prozessor
	Version 2	
	Magneti Marelli	Diagnose
Vito	VDO bis 1999	Eeprom Version 1
	Version 1	
	VDO bis 1999	Eeprom Version 2
	Version 2	
	VDO bis 1999	Tachodiagnose
	Version 1+2	
Betriebsstunden	VDO bis 1999	Eeprom
	VDO ab 2000	Eeprom
	Magneti Marelli	Prozessor
	Version 1	
	Magneti Marelli	Prozessor
	Version 2	
	Magneti Marelli	Diagnose
	2004 Tacho + Zündschloss	Eeprom + Lötunkte
Service-Anzeige	alle Modelle bis 4/1998	Diagnose
	alle Modelle ab 4/1998	Diagnose
Service-Anzeige Diagnose-Strecke seit letztem Service	W 203 W 209 W 211	Diagnose

---

Mitsubishi	Spacegear		Eeprom
		Yazaki	Eeprom
	Spacewagon		Eeprom
	Spacestar		Eeprom
	Spacerunner		Eeprom
	Charisma		Eeprom
	Colt		Eeprom
		Modell 2004	Eeprom
	Lancer		Eeprom
		Modell 2004	Eeprom
	Outlander		Eeprom
	Pajero	Version 1	Eeprom
		Version 2	Eeprom
	Pinin		Eeprom
	Shogun	Version 1	Eeprom
	Version 2	Eeprom	

MV Agusta	Agusta		Eeprom
-----------	--------	--	--------

Nissan	Almera	bis Modell 1999	Eeprom
		Modell 2000	Eeprom
		Version 1	Eeprom
		Modell 2000	Eeprom
		Version 2	Eeprom
		Modell 2001	Eeprom
	Cabstar		Lötunkte
	Cubic		Eeprom
	Cubistar		Eeprom
	Infinity		Eeprom
	Primastar		Eeprom
	Maxima	bis Modell 1999	Eeprom
		ab Modell 2000	Eeprom
	Micra	bis 2002	Eeprom
		ab 2003	Eeprom
Primera	bis Modell 1999	Eeprom	
	Modell 1999	Eeprom	
	Modell 2000	Eeprom	

---

	Modell 2001	Eeprom
Patrol		Eeprom
Patrol	Modell 2003	Eeprom
Pickup		Eeprom
	Modell 2002	Eeprom
	Modell 2003	Eeprom
Presage		Eeprom
Nawaro		Eeprom
Navara	Ab Modell 2004	Prozessor
Nevada	Ab Modell 2004	Prozessor
Pathfinder	bis Modell 2000	Eeprom
	ab Modell 2000	Eeprom
Pathfinder	Ab Modell 2004	Prozessor
Skyline		Eeprom
Tino		Eeprom
Tino	Modell 2004	Eeprom
XTrail		Eeprom
XTrail	Modell 2004	Eeprom
Terrano		Eeprom
	Modell 2002	Eeprom
350 ZX		Eeprom

## Opel

Astra	VDO	Eeprom
	VDO	Diagnose
	VDO Modell 2002	Diagnose
	TRW	Eeprom
	Modell 2004	Eeprom
Corsa		Diagnose
Combo		Diagnose
Frontera	VDO	Eeprom
	VDO	Diagnose
	TRW	Eeprom
	Delco	Eeprom
Vectra	VDO bis 3/1999	Eeprom
	VDO bis 3/1999	Diagnose
	VDO ab 3/1999	Eeprom
	VDO ab 3/1999	Diagnose
	Modell 2002	Eeprom

---

Meriva		Diagnose
Monterey		Eeprom
Movano		Eeprom
Omega		Eeprom
Signum		Eeprom
Vivaro		Eeprom
Vivaro	Version 2	Eeprom
Zafira	VDO	Eeprom
	VDO	Diagnose
	VDO Modell 2002	Diagnose
	TRW	Eeprom
Zafira	Modell 2005	Eeprom

## Peugeot

106		Tachodiagnose
206	bis 2001	Prozessor
	bis 2001	Tachodiagnose
	Service -2001	Tachodiagnose
	Nec 2002 Tacho + BCU	Eeprom
	Nec 2003 Tacho + BCU	Eeprom
	BCU Autodetect	
306	Version 1	Eeprom
	Version 2	Eeprom
306		Tachodiagnose
307	V1	Lötpunkte
	V2	Lötpunkte
	V3	Lötpunkte
	2003	Eeprom
	Ab Modell 2003 Tacho	NEC-Hardware
307	Modell 2006	Eeprom
406	Sagem	Eeprom
	Jaeger	Prozessor
	VDO Version 1 Tacho + BCU	Eeprom
	VDO Version 2	Eeprom



		Tacho + BCU	
		VDO Version 3	Eeprom
		Tacho + BCU	
		BCU 95040	Eeprom
607		Tacho + BCU	Eeprom
			Tachodiagnose
806			Prozessor
			Tachodiagnose
807		3 Module	Eeprom + Lötunkte
807		Version 2	Prozessor
807		Version 3	Prozessor
807		Version 4	Prozessor
807		Version 5	Prozessor
1007			Eeprom
Partner			NEC-Hardware
Boxer			Eeprom
Expert			Prozessor
Porsche	928		Eeprom
	996	bis Modell 2000	Eeprom
		bis Modell 2000	Diagnose
		ab Modell 2000	Eeprom
		BCU ab 2000	Eeprom
	997	Modell 2005	Eeprom
	Boxster	bis Modell 2000	Eeprom
		bis Modell 2000	Diagnose
		ab Modell 2000	Eeprom
	Boxster	Modell 2005	Eeprom
	Cayenne		Eeprom
	Turbo		Eeprom
Renault	Avantime	Tacho+BSI	Prozessor
	Clio	Sagem bis Modell 1999	Eeprom
		Sagem	NEC-Hardware

---

	Sagem 2002 (NEC)	Eeprom
	Jaeger	Eeprom
	Jaeger 908	Prozessor
	Jaeger 908	Tachodiagnose
	Modell 2004	Eeprom
Clio	Modell 2005	Eeprom
	Modell 2006	Eeprom
Dacia		Eeprom
Modus		Eeprom
	ab Modell 2000	
Espace	Tacho + BCU Version 1	Prozessor
	ab Modell 2000	
	Tacho + BCU Version 2	Prozessor
	2003 V1	Eeprom
	2003 V2	Eeprom
	2006	Eeprom
Kangoo		Eeprom
	908	Prozessor
	908	Tachodiagnose
	ab Modell 2003	Eeprom
Laguna	Sagem	Eeprom
Laguna 2001	908	Prozessor
	912	Lötpunkte
Laguna	Modell 2004	Prozessor
Logan		Eeprom
Master		Eeprom
Megane	Sagem bis Modell 1999 Version 1	Eeprom
	Sagem bis Modell 1999 Version 2	Eeprom
	Sagem	NEC-Hardware
	Sagem 2002 (NEC)	Eeprom

---

	Jaeger	Prozessor
	Jaeger 908	Prozessor
	Jaeger 908	Tachodiagnose
	Visteon V1	Eeprom
	Visteon V2	Eeprom
	Sagem 2004	Eeprom
Scenic	Sagem bis Modell 1999 Version 1	Eeprom
	Sagem bis Modell 1999 Version 2	Eeprom
	Sagem	Nec-Hardware
	Sagem 2002 (NEC)	Eeprom
	Jaeger	Prozessor
	Jaeger 908	Prozessor
	Jaeger 908	Tachodiagnose
	Visteon	Eeprom
Safrane	Version 1	Eeprom
	Version 2	Eeprom
	Version 3	Eeprom
	Version 4	Eeprom
Twingo	VDO bis Modell 2000	Prozessor
	VDO ab Modell 2001	Prozessor
	Borg bis Modell 2000	Prozessor
	Borg ab Modell 2001	Prozessor
Traffic		Eeprom
Vel Satis		Lötpunkte
Vel Satis	Modell 2005	Processor (9S12)
Megane Sagem		NEC-Hardware
Tacho		
Rover	25	Eeprom
	45	Eeprom

	75	Nur für BMW LKM-Besitzer	Diagnose (Ohne BMW: EEprom)
	Minicooper	Tacho + LKM	Lötpunkte
	MGF		Eeprom
<b>Saab</b>	93	Version 1	Eeprom
		Version 2	Eeprom
		Modell 2003	Eeprom
	93	Ab Modell 2004	Eeprom
	95	Version 1	Eeprom
		Version 2	Eeprom
<b>Ssang Yong</b>	Rexton		Prozessor
	Rodius		Eeprom
<b>Seat</b>	Alle Modelle	sind identisch	mit Volkswagen!
	Toledo	Modell 2002	Eeprom
	Leon 2002		Eeprom
	Ibiza	TRW 2003	Eeprom
		Modell 2002 VDO	Diagnose
		Modell 2002 VDO	Eeprom
	Altea		Can-Diagnose
<b>Skoda</b>	Alle Modelle	sind identisch	mit Volkswagen!
	Octavia	Bis Modell 2005	Diagnose
	Octavia	Ab Modell 2005	Can-Diagnose
	Octavia	Ab Modell 2006	Can-Diagnose
	Suberb		Can-Diagnose
<b>Smart</b>	Smart		Eeprom + Prozessor
	Roadster		Eeprom + Lötpunkte
<b>Subaru</b>	Forester		Eeprom
		Modell 2002	Eeprom
		2003	Eeprom
	Impreza	bis 2002	Eeprom

		ab 2002	Eeprom
	Legacy		Eeprom
		Modell 2004	Eeprom
	Outback		
		2003	Eeprom
			2X EEPROM
Suzuki	Alto		Eeprom
	GSX-R 750		Eeprom
	GSX-R1000		Eeprom
	Carry		Eeprom
	Bandit		Eeprom
	Burgmann		Eeprom
	Hayabusa		Eeprom
	Ignis		Eeprom
	Jimny	Maneti Marelli 908	Prozessor
	Jimny	Denso	Eeprom
	Liana		Eeprom
	Swift		Eeprom
	Vitara		Eeprom
	Grand Vitara		Eeprom
	XF 650		Eeprom
	TL 1000		Eeprom
	Vitara		Eeprom
	XF 650		Eeprom
Toyota	Avensis		Eeprom
		2003	Eeprom
	Picnic		Eeprom
	Camry		Eeprom
	Celica		Eeprom
	Hiace		Eeprom
	HJ100		Eeprom
	RAV 4		Eeprom
		Modell 2006	Eeprom
	Yaris		Eeprom
		Modell 2003	Eeprom

---

Corolla		Eeprom
	Modell 2002	Eeprom
Corolla Verso		Eeprom
Granvia		Eeprom
Landcruiser	Version 1	Eeprom
	Version 2	Eeprom
	Modell 2001	Eeprom
	Modell 2002	Eeprom
Previa		Eeprom
Previs		Eeprom
Prius		Eeprom
Prado		Eeprom
MR 2		Eeprom

Volvo	V40/S40	Eeprom
	V40/S40	Modell 2004
	V40/S40	Prozessor
	V60/S60	912 80 Pin
	V60/S60	912 112 Pin
	V60/S60	Modell 2004
	V60/S60	Prozessor
	XC60	Modell 2004
	XC60	Processor
	V70/S70	Bis Modell 1999
	V70/S70	Eeprom
	V70/S70	ab Modell 1999
	V70/S70	Prozessor
	V70/S70	(908)
	V70/S70	ab Modell 2001
	V70/S70	Prozessor
	V70/S70	(912) 80 Pin
	V70/S70	ab Modell 2001
	V70/S70	Prozessor
	V70/S70	(912) 112 Pin
	XC70	Ab Modell 2004
	XC70	Prozessor
	S80	908
	S80	Prozessor
	S80	912 80 Pin
	S80	Prozessor
	S80	912 112 Pin
	S80	Prozessor
	850	Version 1
	850	Eeprom
	850	Version 2
	850	Eeprom
	850	Version 3
	850	Eeprom
	850	Version 4
	850	Eeprom
	960	Eeprom

---

**Volkswagen**

Golf 3	VDO Version 1	Eeprom
	VDO Version 1	Tachodiagnose
	VDO Version 2	Eeprom
	MM SW 4.0 –6.4	Eeprom
	MM SW 4.0 –6.4	Tachodiagnose
	MM SW 3.0 –3.1	Eeprom
	TRW	Eeprom
Golf 4	VDO bis 2001 Version 1	Eeprom
	VDO bis 2001 Version 2	Eeprom
	VDO bis 2001	Diagnose
	MotoMeter bis 2001 Version 1	Eeprom
	MotoMeter bis 2001 Version 2	Eeprom
	MotoMeter bis 2001	Diagnose
	VDO ab 2001	Eeprom
	VDO ab 2001	Diagnose
	MotoMeter ab 2001	Eeprom
	MotoMeter ab 2001	Diagnose
	VDO ab 2002	Eeprom
	VDO ab 2002	Diagnose
	MotoMeter ab 2002	Eeprom
	MotoMeter ab 2002	Diagnose
Golf 4	RB4 / RB8	Diagnose (Schneller Suchlauf)
Golf 5	VDO V1	Diagnose
Golf 5	VDO V2 Modell 2004	Diagnose
Golf 5	Visteon	Diagnose
Gol	Südamerika	Eeprom

---

Bora	VDO bis 2001 Version 1	Eeprom	
	VDO bis 2001 Version 2	Eeprom	
	VDO bis 2001	Diagnose	
	MotoMeter bis 2001 Version 1	Eeprom	
	MotoMeter bis 2001 Versoin 2	Eeprom	
	MotoMeter bis 2001	Diagnose	
	VDO ab 2001	Eeprom	
	VDO ab 2001	Diagnose	
	MotoMeter ab 2001	Eeprom	
	MotoMeter ab 2001	Diagnose	
	VDO ab 2002	Eeprom	
	VDO ab 2002	Diagnose	
	MotoMeter ab 2002	Eeprom	
	MotoMeter ab 2002	Diagnose	
	Corrado	VDO	Eeprom
		VD202	Eeprom
MotoMeter		Eeprom	
MotoMeter SW 1.3-1.8		Eeprom	
MotoMeter SW 1.3-1.8		Tachodiagnose	
Passat B3	VDO	Eeprom	
	VD202	Eeprom	
	MotoMeter	Eeprom	
	MotoMeter	Tachodiagnose	
	MotoMeter SW 1.3-1.8	Eeprom	
	MotoMeter SW 1.3-1.8	Tachodiagnose	



---

Passat B5	Magneti Marelli	Diagnose
	VDO Version 1	Eeprom
	VDO Version 1	Diagnose
	VDO Version 2	Eeprom
	VDO Version 2	Diagnose
	MotoMeter	Eeprom
	MotoMeter	Diagnose
Passat B6	VDO Version 1	Eeprom
	VDO Version 2	Eeprom
	MotoMeter 2003	Eeprom
	VDO alle	Diagnose
	MotoMeter 2003	Diagnose
Passat B7	VDO	Can-Diagnose
T4	bis 10/1998	Eeprom
	bis 10/1998	Tachodiagnose
	ab 10/1998	Eeprom
	ab 10/1998	Diagnose
	Modell 2002	Diagnose
Sharan	bis Modell 2001	Diagnose
	ab Modell 2001 Version 1	Eeprom
	ab Modell 2001 Version 2	Eeprom
	ab Modell 2001	Diagnose
	ab Modell 2002	Diagnose
New Beetle	bis Modell 2001	Diagnose
	ab Modell 2001 Version 1	Tachodiagnose
	ab Modell 2001 Version 2	Tachodiagnose
	ab Modell 2001 Version 3	Tachodiagnose
Lupo	Version 1	Eeprom
	Version 2	Eeprom
		Diagnose
Polo	VDO Version 1	Eeprom

---

	VDO Version 1	Tachodiagnose
	VDO Version 2	Eeprom
	MM SW 4.0 –6.4	Eeprom
	MM SW 4.0 –6.4	Tachodiagnose
	MM SW 3.0 –3.1	Eeprom
	ab Modell 1998	Eeprom
	ab Modell 1998	Diagnose
	TRW	Eeprom
	TRW 2000	Eeprom
	VDO 2002	Eeprom
	VDO 2002	Diagnose
	TRW 24C08	Eeprom
Caddy	VDO Version 1	Eeprom
	VDO Version 1	Tachodiagnose
	VDO Version 2	Eeprom
	MM SW 4.0 –6.4	Eeprom
	MM SW 4.0 –6.4	Tachodiagnose
	MM SW 3.0 –3.1	Eeprom
	TRW	Eeprom
Vento	VDO Version 1	Eeprom
	VDO Version 1	Tachodiagnose
	VDO Version 2	Eeprom
	MM SW 4.0 –6.4	Eeprom
	MM SW 4.0 –6.4	Tachodiagnose
	MM SW 3.0 –3.1	Eeprom
	TRW	
LT	VDO bis 1999 Version 1	Eeprom
	VDO bis 1999 Version 2	Eeprom
		Tachodiagnose
	VDO ab 2000	Eeprom
	Kienzle bis 1999	Eeprom
		Diagnose
	Magneti Marelli Version 1	Prozessor
	Magneti Marelli	Prozessor

Version 2

Phaeton	V1	Eeprom
	V2	
<b>Phaeton</b>		<b>Diagnose</b>
Touareg		Diagnose
Touran		Can-Diagnose
Touran	Ab Modell 2004	Can-Diagnose
Service	alle Modelle	Diagnose
Service	CAN Modelle	Diagnose
1551	Fehler löschen CAN	Diagnose

Yamaha

Drag Star		Eeprom
BT Bulldog		Eeprom
Wild Star		Eeprom
Phaser		Eeprom
T-Max		Eeprom
Majestic		Eeprom
Versity		Eeprom
YZF-R1		Eeprom
YZF-R1	Modell 2003	Eeprom
YZF-R6		Eeprom
YZF-R6	Modell 2003	Eeprom

**Das BMW-Kit für den Profi**

Zusatzmodul für BMW Programmierung E46, E38, E39, X5	
<b>Lichtmodul</b>	Programmierung über Prozessor für 912er
<b>Lichtmodul</b>	Programmierung über Diagnose bis 912 Prozessoren
<b>EWS Modul</b>	löschen über Stecker

---

<b>EWS Modul</b>	exakte Programmierung über Stecker
<b>Schlüssel</b>	Auslesen mit Keyreader
<b>Schlüssel</b>	Programmierung
<b>KM-Check</b>	Lesen von Tacho, Lichtmodul + EWS über Diagnose
<b>TV-Freischaltung</b>	Aktivieren der TV Funktion für MK III System während der Fahrt über Diagnose

E-mail:[autocardiag@gmail.com](mailto:autocardiag@gmail.com)

Skype:Marshall.obd2

Whatsapp:86-13476108995

[www.autocardiag.com](http://www.autocardiag.com)