

## How to update FMPC001 ford mazda automatic pin-code reader

(Oct. 09th, 2015) Newest FMPC001 INCODE Calculator V1.5 has been released. This is the detail introduction of it, including software news and update guides.



### Compatible device:

FMPC001 INCODE Calculator V1.5 for Ford Mazda Land Rover Jaguar

### What's new in V1.5 FMPC001 Incode Calculator?

- (1) Increase smart card matching program for Ford Sierra . (Free)
- (2) Increase new agreements of the smart card and key matching procedure for two new Mondeo. (Free)
- (3) Increase Lincoln MKC smart card matching program. (Free)
- (4) Increase Land Rover Discovery Sport mileage meter calibration recovery. (Free)
- (5) Fixed Land Rover Jaguar Smart matching program BUG (program will be more stable; support more models, and supports all key lost). (Free)

### How to install the newest FMPC001 Incode Calculator V1.5?

Attention:

1. Please install the driver first, and then install the software.
2. On the bottom left of the calculator is the frequency of use; that is tokens remaining.  
On the bottom right is the activation times; it is available to connect to the network for free activate between 0-10.



Installation steps:

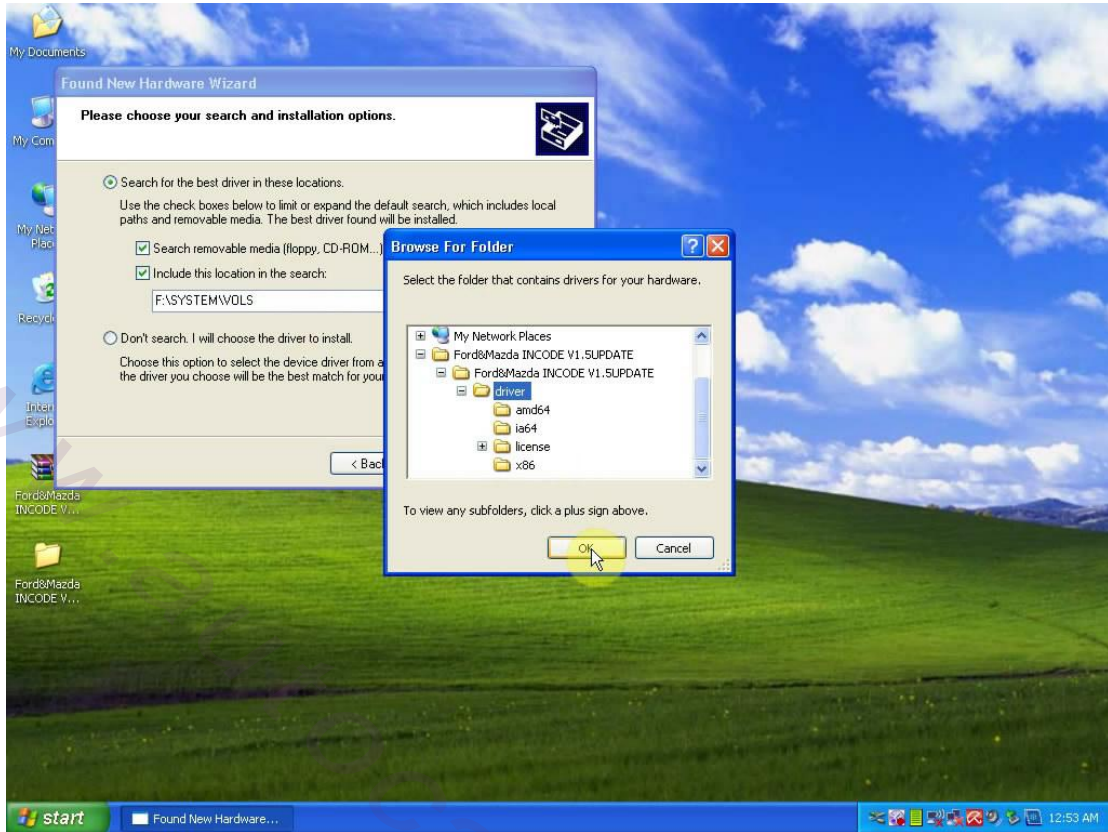
- I. Download file
- II. Install software for FMPC001
- III. Update FMPC001 INCODE Calculator

#### **I. Download file**

Download the zip file "Ford&Mazda INCODE V1.5UPDATE.zip" on Desktop.  
Right click the zip file "Ford&Mazda INCODE V1.5UPDATE.zip" for "Extract files...".  
Click OK.

#### **II. Install software for FMPC001**

Click Next with the selection of "Install from a list of specific location (Advanced)".  
Tick on "Include this location in the search", click Browse For Folder: Ford&Mazda INCODE V1.5UPDATE>>Ford&Mazda INCODE V1.5UPDATE>> driver. Click OK.



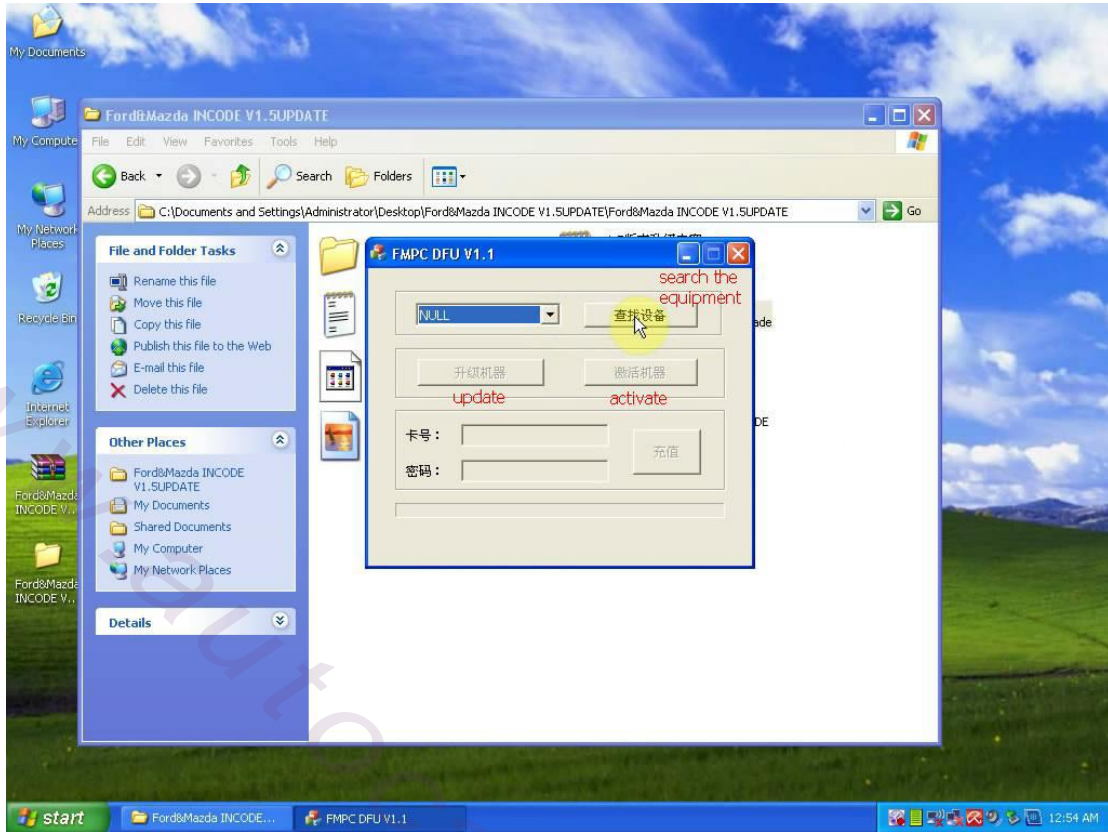
Click Next to go on.

Click Finish.

### III. Update FMPC001 INCODE Calculator

On Desktop, open Ford&Mazda INCODE V1.5UPDATE>>Ford&Mazda INCODE V1.5UPDATE>> FMPC DFU V1.1

Click to search the device.



Click Update.

Open Ford&Mazda INCODE V1.5UPDATE>>Ford&Mazda INCODE V1.5UPDATE>>FMPC DFU V1.1.exe, click Open.

Updating... Wait for about 5 minutes.

Update success. Click OK.

Close FMPC DFU V1.1 interface.

Done.

Read more about V1.7 FMPC001 INCODE Calculator, please go to

E-mail:autocardiag@gmail.com

Skype:AutoDiag

Whatsapp:0086-13667154167

[www.autocardiag.com](http://www.autocardiag.com)